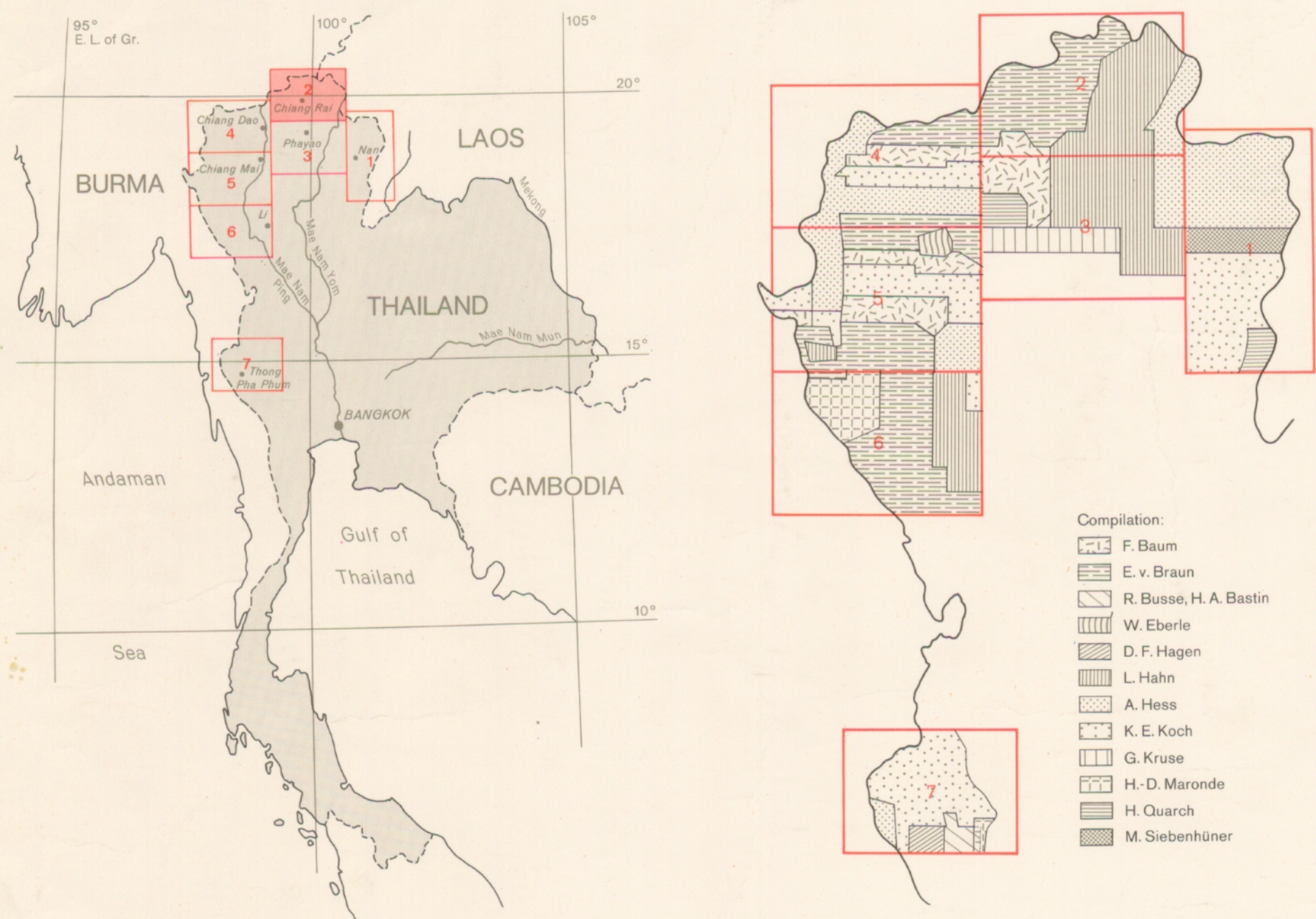


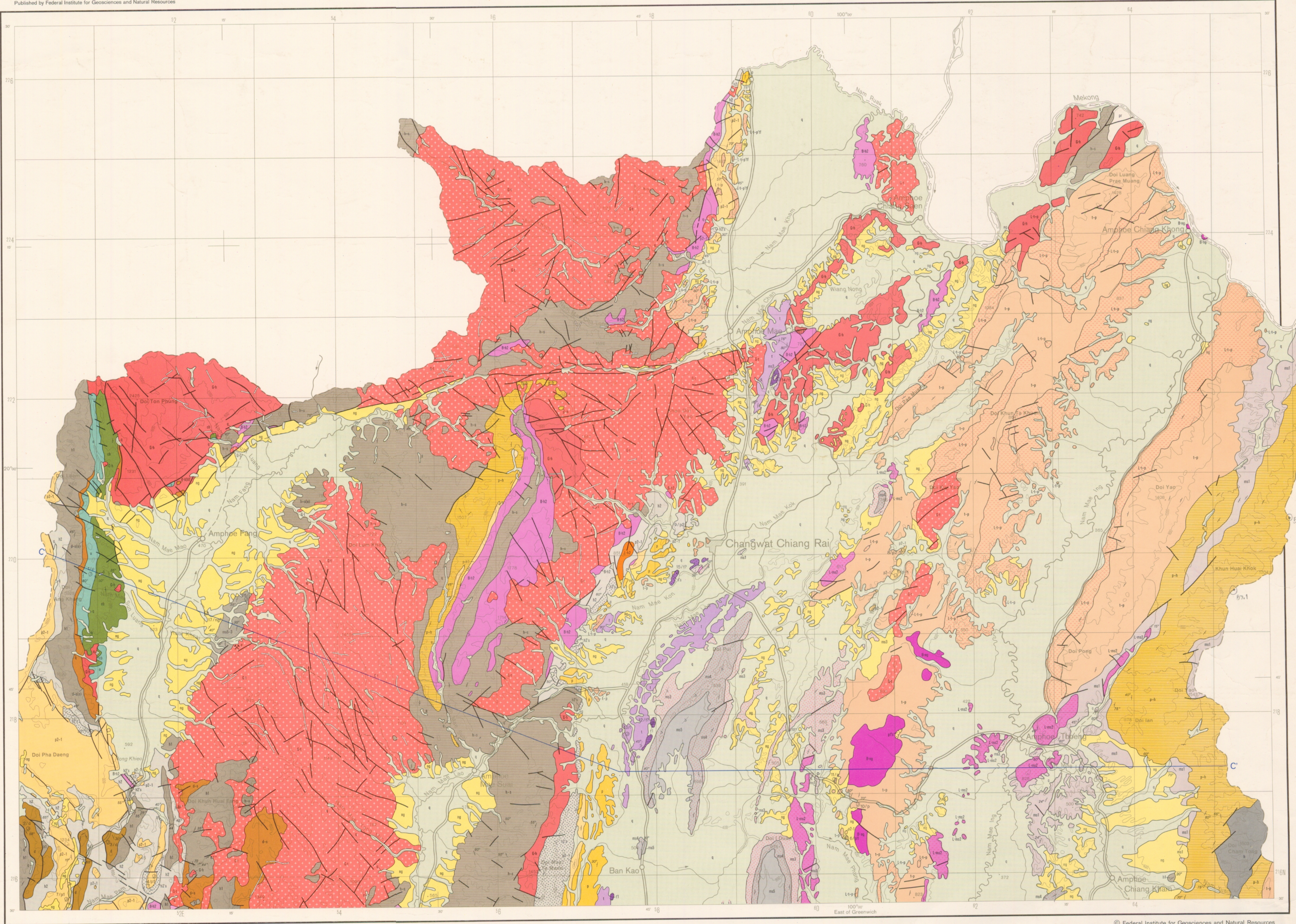
Geological Map of Northern Thailand 1 : 250000
Compiled by E. v. Braun und L. Hahn

Sheet (Chiang Rai) 2

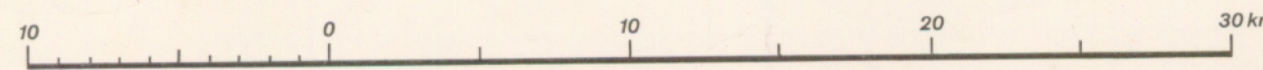


Age	Sediments		Volcanics		Plutonics	
	Symbol	Code	Symbol	Code	Symbol	Code
Neozoic	Holocene	h				
	Quaternary	q				
	Pleistocene	pl				
	Neogene	ng				
Mesozoic	Tertiary	t				
	Paleogene	pg				
	Cretaceous	c				
	Jurassic	j				
Paleozoic	Upper	u				
	Triassic	tr				
	Middle	m				
	Lower	l				
	Permian	p				
	Middle	pm				
	Lower	pl				
	Carboniferous	cf				
	Upper	cu				
	Lower	cl				
Paleozoic	Devonian	d				
	Silurian	s				
	Ordovician	o				
	Cambrian	c				
	Precambrian	pr				

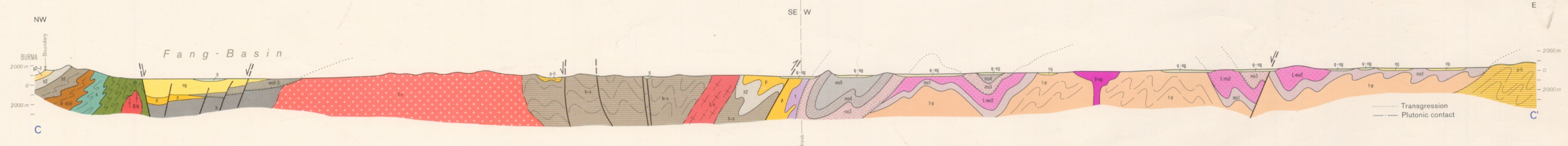
Prepared by German Geological Mission in Thailand
In cooperation with Geological Survey Division Department of Mineral Resources
Published by Federal Institute for Geosciences and Natural Resources



Hannover 1976



Transverse Mercator Projection



© Federal Institute for Geosciences and Natural Resources
printed in Germany (Federal Republic), 1976; Cartography: S. Grötsch
Sale: Geo Center, Box 80 08 30, D-7000 Stuttgart 80