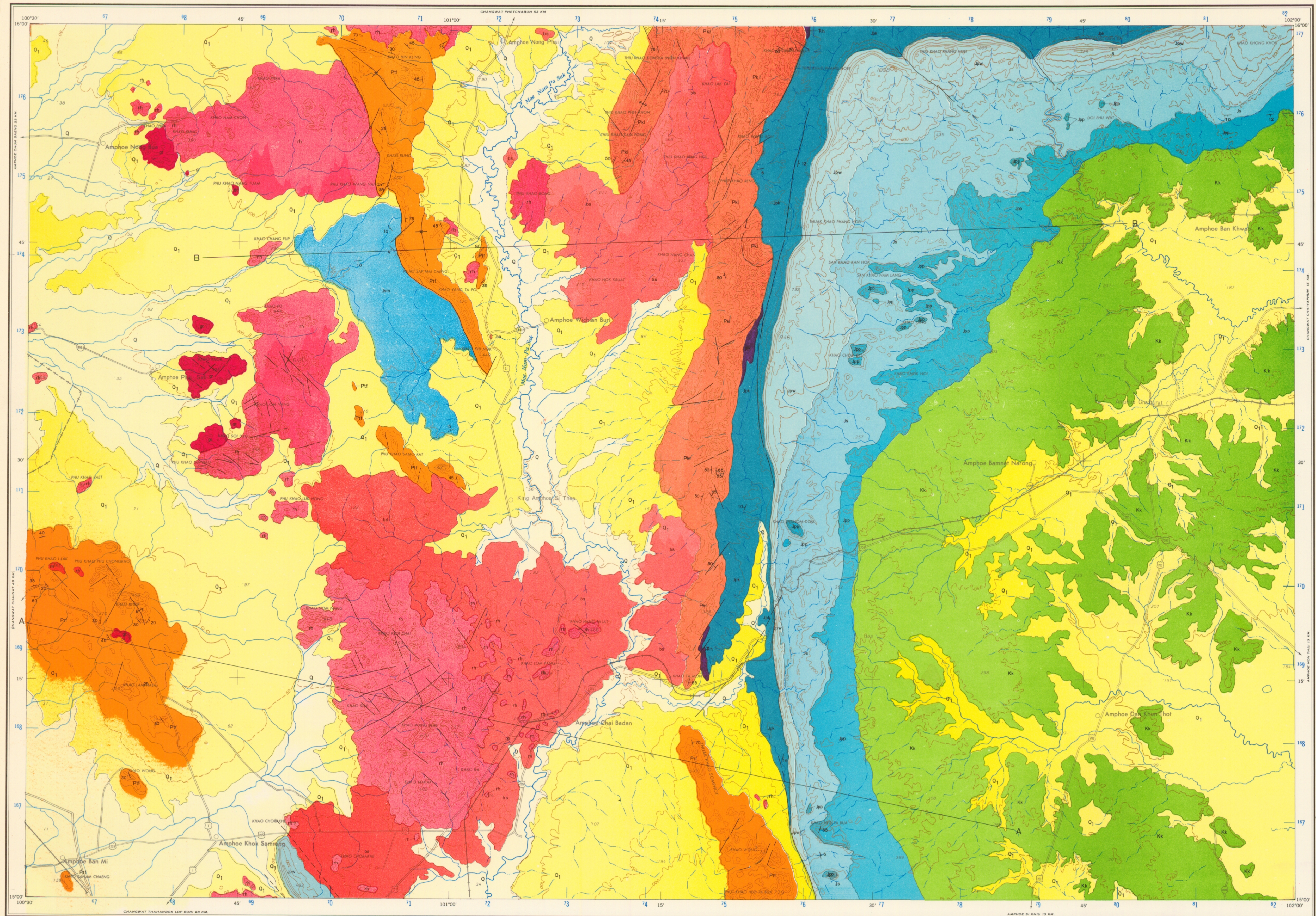


AMPHOE BAN MI

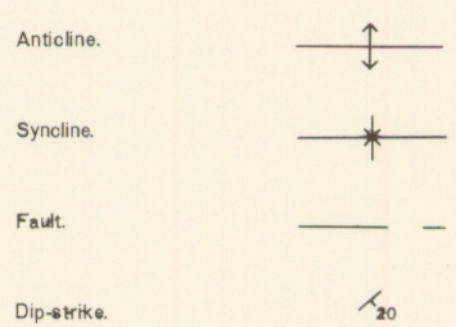
GEOLOGICAL MAP OF THAILAND, 1:250,000

FIRST EDITION
REFER TO THIS MAP AS : ND 47-4



		FORMATION	GROUP	AGE	
<div><div>Q</div></div>	Recent river alluvial deposits.			RECENT	QUATERNARY
<div><div>Q₁</div></div>	Sand, silt, clay of Pleistocene river terrace deposits, calcareous tufa and lateritic soil.			PLEISTOCENE	
UNCONFORMITY					
<div><div>Kh</div></div>	Pale red, fine grained, calcareous sandstone and conglomerate of pale red siltstone pebbles.	KHOK KRUAT	}		CRETACEOUS
<div><div>Ph</div></div>	White to pale brown, medium to coarse-grained sandstone with prominent features of cross bedding and friable quartz-chert pebbles.	PHU PHAN			
<div><div>Js</div></div>	Cross-bedded, friable, gray, fine to medium-grained sandstone and greenish-gray siltstone.	SAO KHUA			
<div><div>Phw</div></div>	White to light brown, medium-grained sandstone interbedded with siltstone.	PHRA WIHAN	}		JURASSIC
<div><div>Phk</div></div>	Friable purplish-red calcareous siltstone cross bedded fine to medium-grained sandstone.	PHU KRADUNG			
<div><div>Sm</div></div>	Pale brown medium-grained cross-bedded friable pebbly sandstone of volcanic rock and limestone pebbles.	SAP MAI DAENG (SANDSTONE)			
<div><div>Th</div></div>	Conglomerate of poor sorted rounded to sub-rounded pebbles of limestone and volcanic rocks.	HUAI HIN LAT			TRIASSIC
UNCONFORMITY					
<div><div>Pr</div></div>	Massive to well bedded, light gray to bluish-gray limestone, sandstone and shale.	TAK FA	}		PERMIAN
<div><div>Ph</div></div>	Brown to dark brown shale and slaty shale interbedded with massive recrystalline limestone, intercalated band of limestone and sandstone and limestone lenses.	KHAO LUAK			
IGNEOUS ROCKS					
<div><div>Ba</div></div>	Basalt.				QUATERNARY
<div><div>Ph</div></div>	Phylite, tuff, agglomerate and andesite.				TRIASSIC
<div><div>G</div></div>	Granite.				

GEOLOGICAL SYMBOLS.



PUBLISHED BY GEOLOGICAL SURVEY DIVISION, DEPARTMENT OF MINERAL RESOURCES.

PRINTED BY THE ROYAL THAI SURVEY DEPARTMENT 1977

Scale 1:250,000

PISOOT SUDASNA : DIRECTOR GENERAL
KASET PITAKPAIVAN : DIRECTOR
GEOLOGICAL SURVEY DIVISION, DEPARTMENT OF MINERAL RESOURCES
BANGKOK, THAILAND
1976

Compiled by Nikorn Nakornin under the supervision of Kaset Pitakpaivan from S. Samseng N. Nakornin, N. Jangyosuk, V. Pajitrapaporn, P. Saravut and V. Tangchaisan (Reconnaissance Geologic Map of sheet Amphoe Ban Mi 1972, unpublished); Nikorn Jangyosuk, Yongsith Tangchaisan (Geological maps of 47 P. E.H. 24 and F.H1, F.H2, 3, 4, 1972 unpublished).

